



Ein globales Schutzgebietsnetzwerk in den Weltmeeren – welchen Beitrag leistet Natura 2000?

Veranstaltung: Management von Natura-2000-Gebieten in der Nord- und Ostsee

08.11.2013, Berlin

Dr. Henning von Nordheim

Wiss.Direktor
Fachgebietsleiter *Meeres- und Küstennaturschutz*



Global relevante MPA-Konferenzen

WSSD Johannesburg, 2002

CBD-COP 11, Hyderabad, 2012

IMPAC III, 21.-25.10.2013, Marseille

CCAMLR, 23.10.-1.11.2013, Hobart



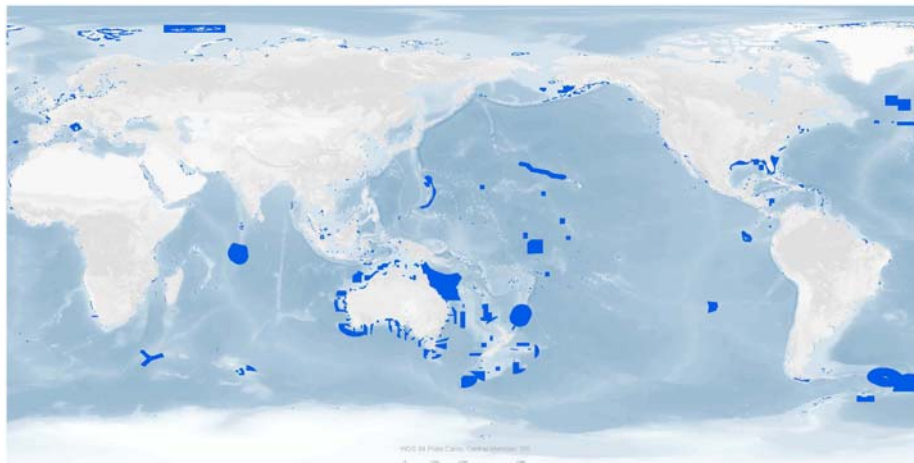
BDC Strategic Plan Biodiversity 2011–2020 “Living in Harmony with Nature”

“Aichi” - Target 11

By 2020, at least 17 per cent of terrestrial and inland water areas and **10 per cent of coastal and marine areas**, especially areas of particular importance for biodiversity and ecosystem services, are conserved through effectively and equitably managed, ecologically representative and well-connected systems of protected areas and other effective area-based conservation measures, and integrated into the wider landscape and seascape.



MARINE PROTECTED AREAS



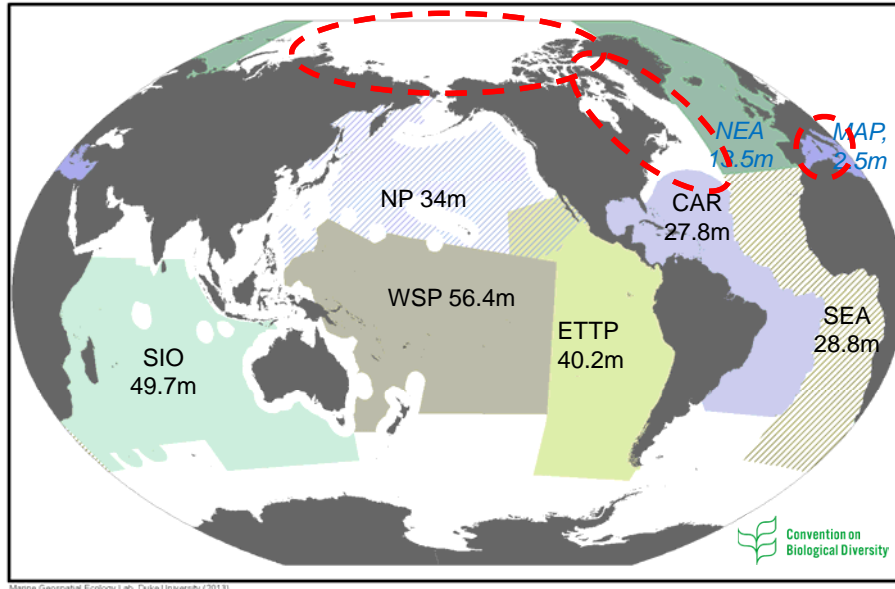
Protecting 2.8% of the Global Ocean

Source: IUCN and UNEP-WCMC (2013). The World Database on Protected Areas (WDPA) Official Map Series: Marine Protected Areas. Series M01. WDPA October 2013 Release. Map available at: www.protectedplanet.net/ocean, WDPA available at www.protectedplanet.net.



Ocean area covered by CBD EBSA regional workshops as well as relevant regional EBSA processes: 252.9 million sq.km

(about 75 % of total estimated ocean area, 335 million sq.km)



Geplante CBD-Workshops 2014

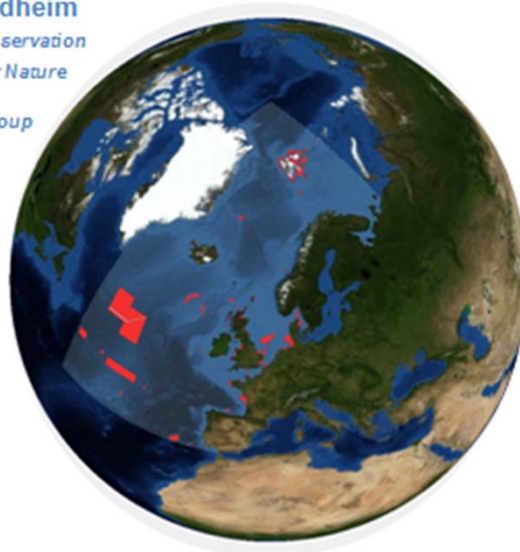
- Mittelmeer
- Südwest-Atlantik
- Arktis



Regionale Aspekte + deutsche Meeresgebiete

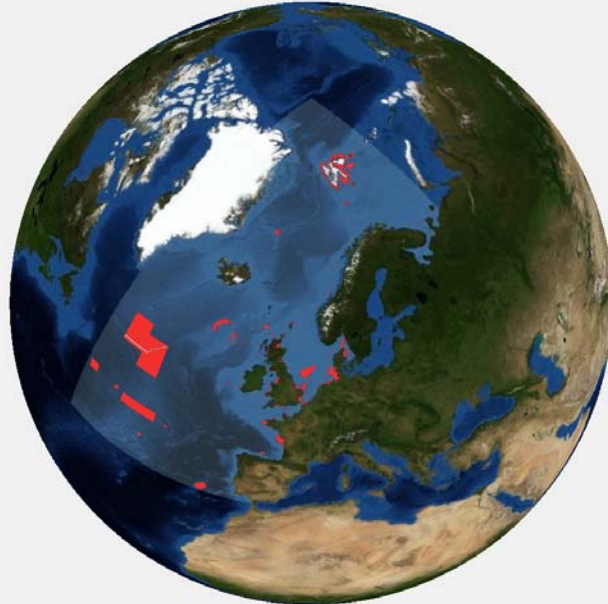
15 years of successful collaboration

Dr. Henning von Nordheim
Scientific Director Marine Conservation
German Federal Agency for Nature Conservation
Chair of OSPAR MPA Group



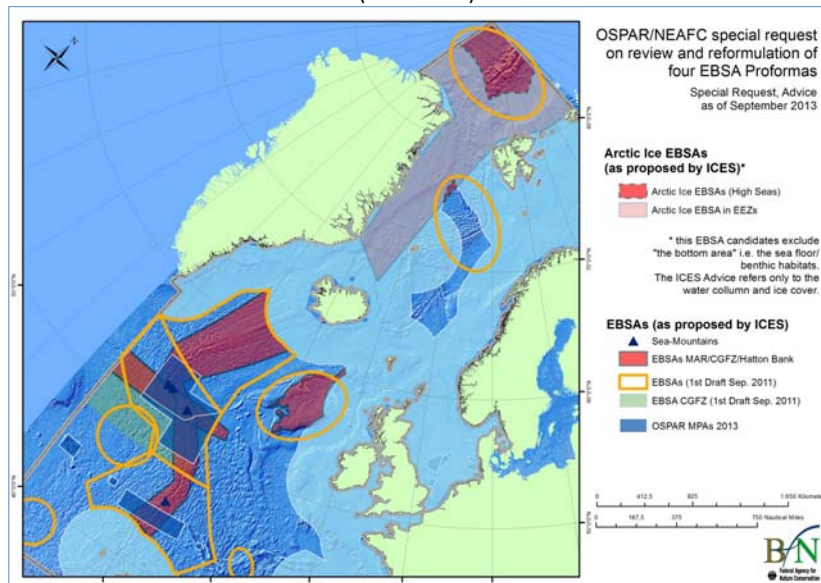
Status des OSPAR Netzwerkes von Meeresschutzgebieten

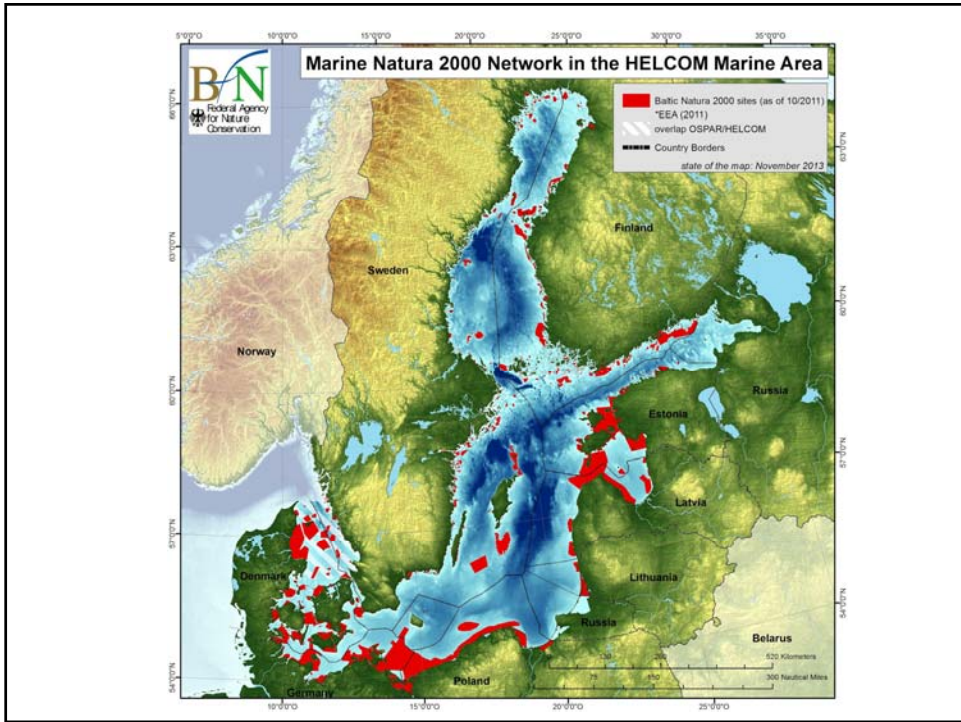
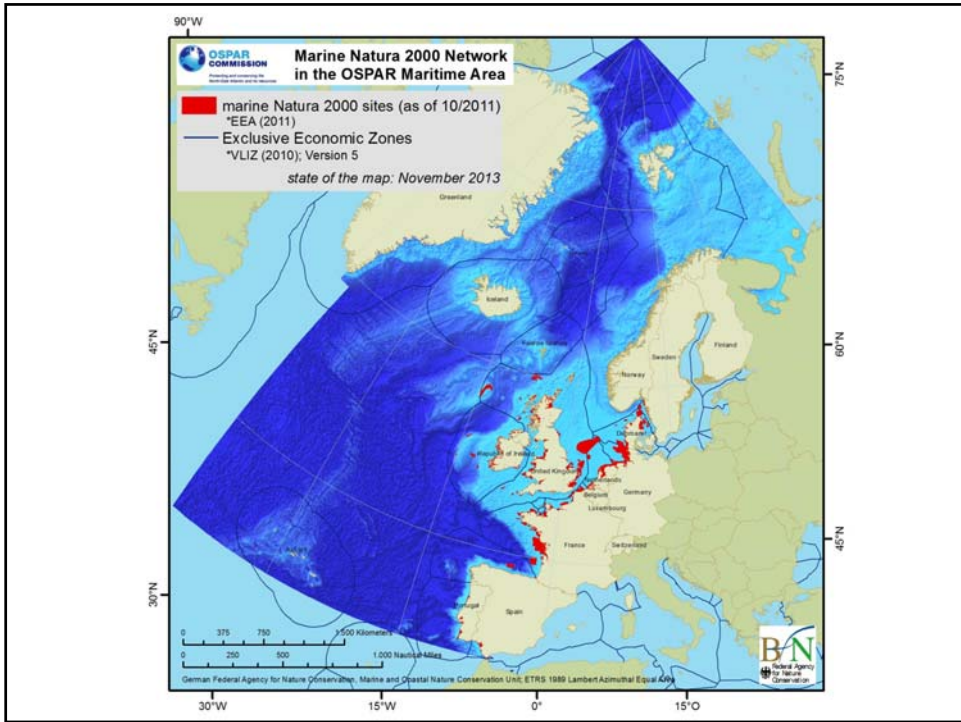
(Stand 31. Dezember 2012)

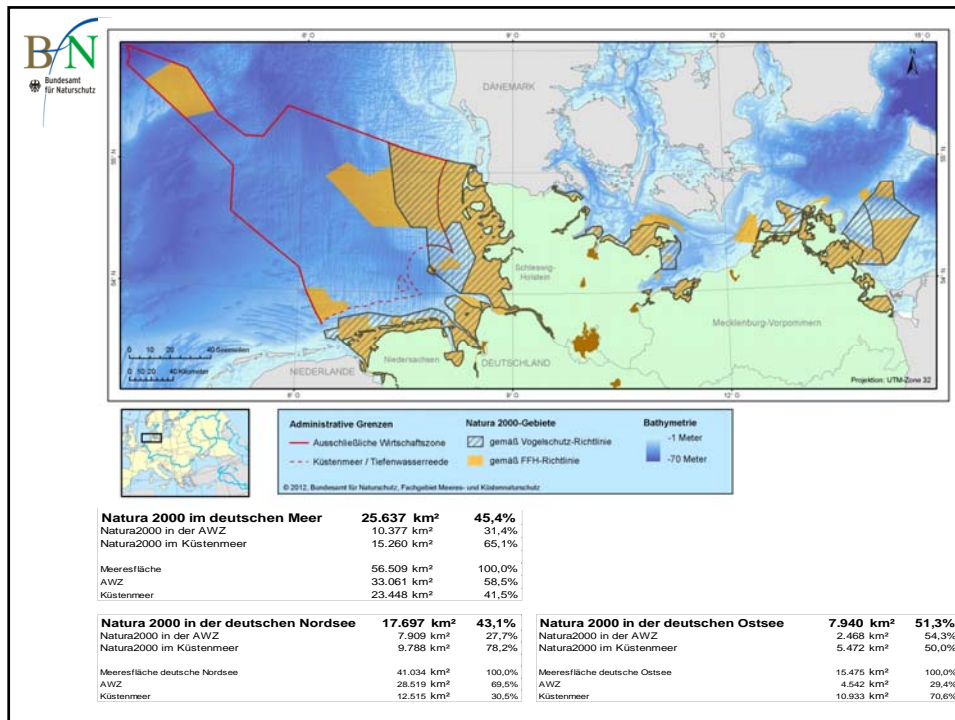


Vorläufiger Stand der OSPAR/NEAFC EBSAs Vorschläge

(Nov. 2013)







BfN
Federal Agency for
Nature Conservation

*Ein deutsches Meeresschutzgebiet
ist nur **so** gut
wie seine Schutzgebietsverordnung
und sein Managementplan*



Danke für Ihre Aufmerksamkeit

*Ein globales Schutzgebietsnetzwerk in den Weltmeeren –
welchen Beitrag leistet Natura 2000?*

Dr. Henning von Nordheim

Wissenschaftlicher Direktor

Fachgebietsleiter „Meeres- und Küstennaturschutz“

